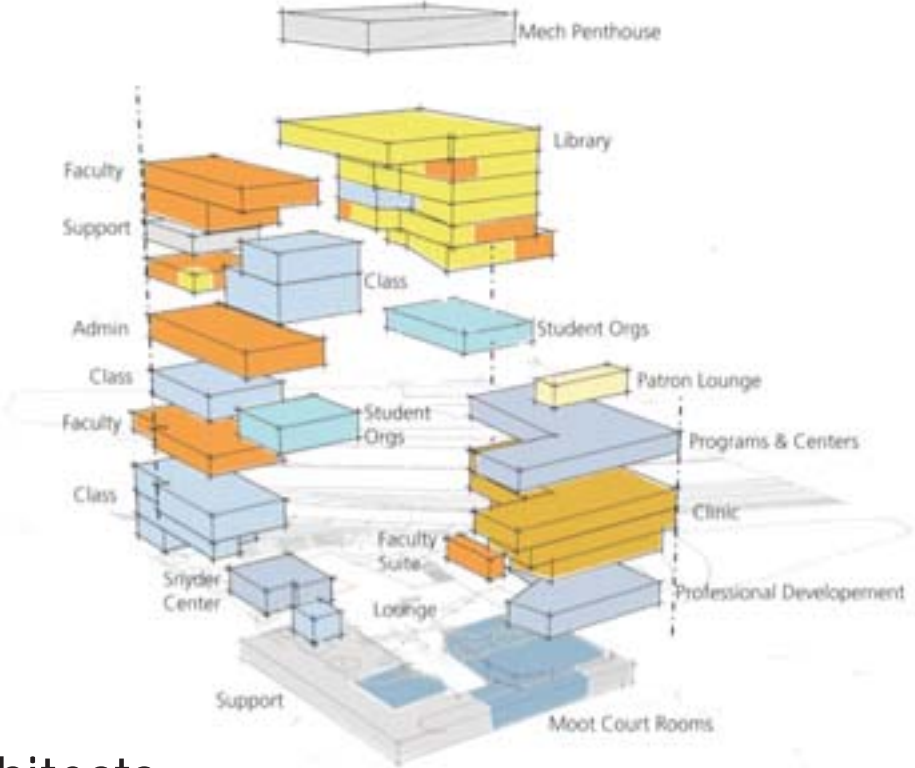
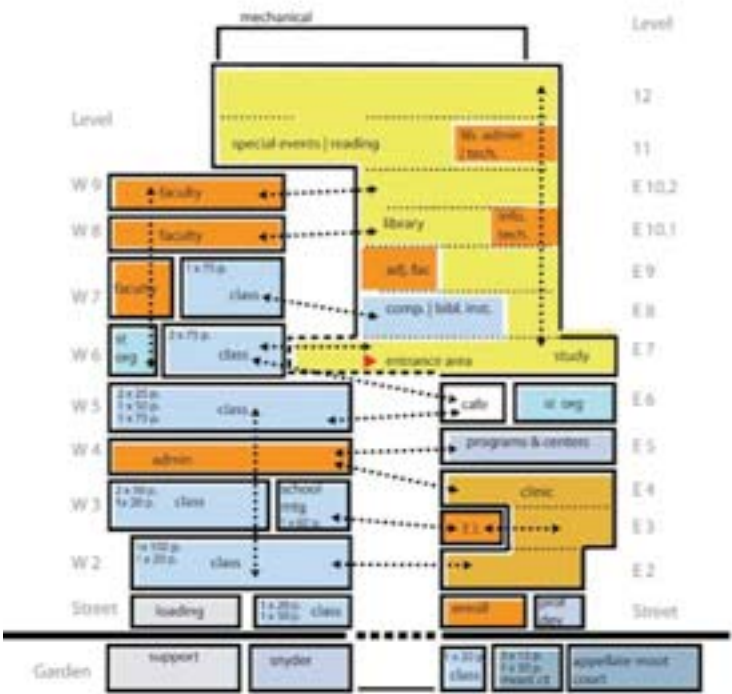
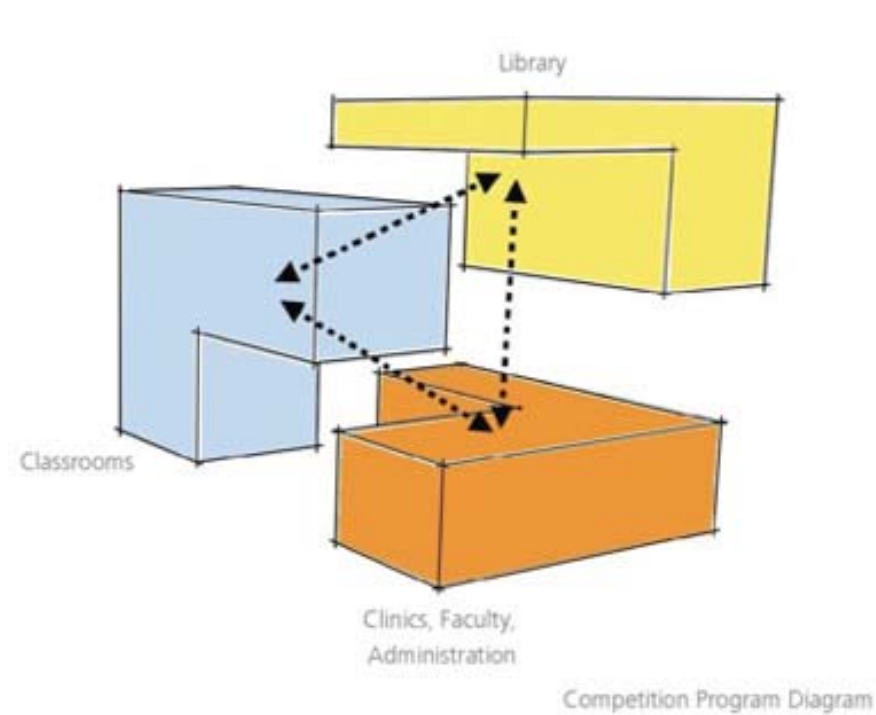




The John and Frances Angelo Law Center is a new law facility for the University of Baltimore. The building is three large volumes, one for classrooms, the library and the administration area each. The three volumes are connected by a large atrium that flows throughout the center of the space. The building is designed to be a prominent piece of architecture in Baltimore's skyline, and to not be overshadowed by the nearby Penn Station.



Case Study #3 John and Frances Angelo Law Center, Baltimore Benisch Architects





Case Study #3 John and Frances Angelo Law Center, Baltimore Benisch Architects